

OFFICE/MEDICAL SPACE FOR LEASE

OPPORTUNITY

NORTH SIDE PROFESSIONAL CENTER
1516 N. Shenandoah Ave. | Front Royal, VA 22630
First Class Office/Medical Space

- Suite D 2,200 SF



HIGHLIGHTS

- Great access to retail amenities including hotels, banking, restaurants
- Retail exposure to Shenandoah Ave.
- Easy access to Rt. 66.
- Located in the heart of Front Royal, VA.
- Private parking area with generous parking ratio
- Modern interior finishes with traditional looking exterior.
- Class A built out space
- Front Royal mass transit trolley nearby
- Professionally managed by local ownership
- Lit building signage on pylon sign, and exterior suite signage available.

RENTAL RATE

- \$22.00 PSF
- Net of Utilities and Cleaning

TERM

- 3-10 years



LEGATSM
— COMMERCIAL REAL ESTATE, LLC —

JAMES LEGAT

Principal

☎ |703.677.0101

✉ |jlegat@legatcre.com

AUDREY WALLACE

Vice President

☎ |847.562.6736

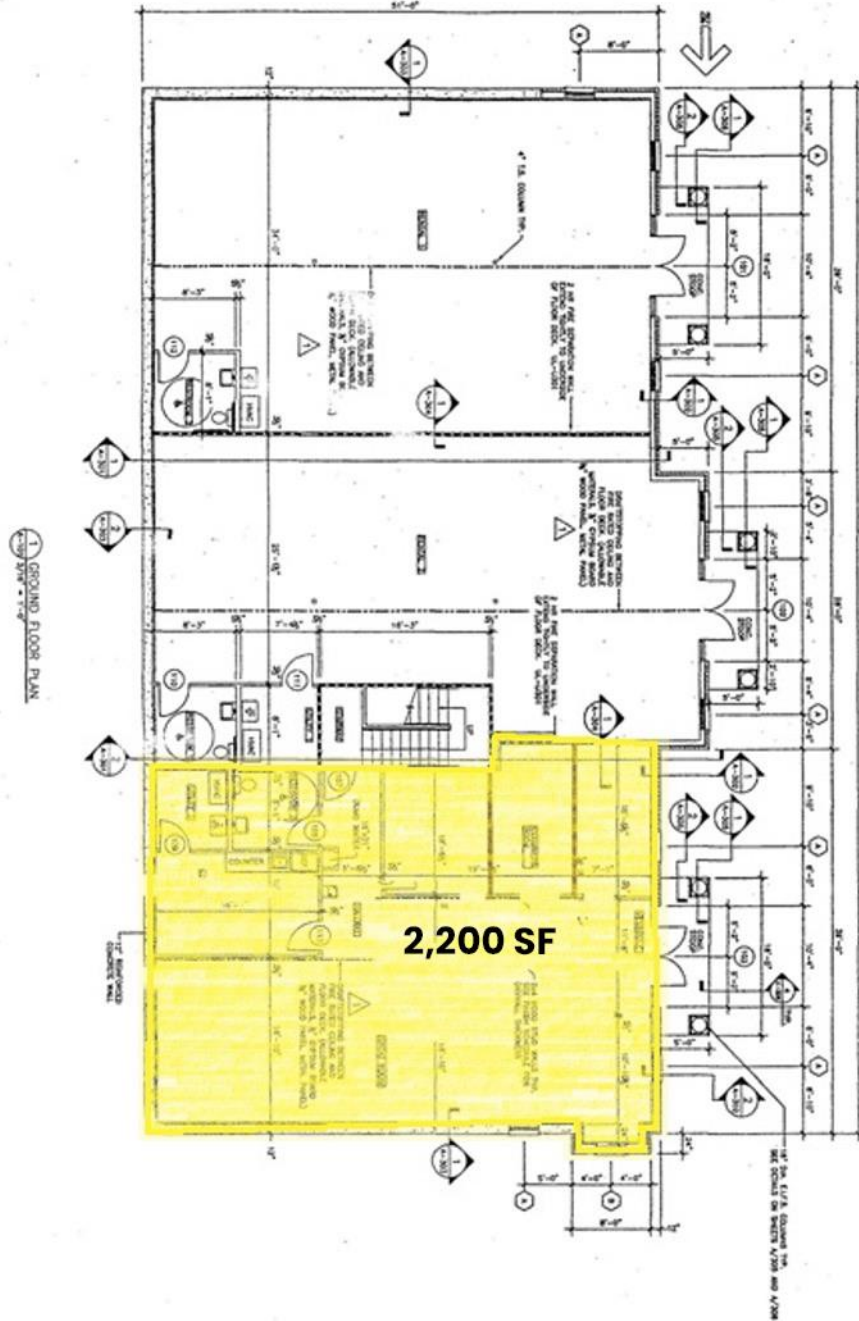
✉ |awallace@legatcre.com

OFFICE/MEDICAL SPACE FOR LEASE

North Side Professional Center
1516 N Shenandoah Ave., Front Royal, VA 22630
First-class Office/Medical Space. First Floor Entrance

Suite D: 2,200 RSF

SUITE D



LEGATSM
— COMMERCIAL REAL ESTATE, LLC —

JAMES LEGAT

Principal

☎ | 703.677.0101

✉ | jlegat@legatcre.com

AUDREY WALLACE

Vice President

☎ | 847.562.6736

✉ | awallace@legatcre.com

OFFICE/MEDICAL SPACE FOR LEASE

North Side Professional Center
1516 N Shenandoah Ave., Front Royal, VA 22630
First-class Office/Medical Space. First Floor Entrance

PHOTOS



JAMES LEGAT
Principal
☎ | 703.677.0101
✉ | jlegat@legatcre.com

AUDREY WALLACE
Vice President
☎ | 847.562.6736
✉ | awallace@legatcre.com

OFFICE/MEDICAL SPACE FOR LEASE

North Side Professional Center
1516 N Shenandoah Ave., Front Royal, VA 22630
First-class Office/Medical Space. First Floor Entrance

AMENITY MAP



LEGATSM
— COMMERCIAL REAL ESTATE, LLC —

JAMES LEGAT
Principal
☎ | 703.677.0101
✉ | jlegat@legatcre.com

AUDREY WALLACE
Vice President
☎ | 847.562.6736
✉ | awallace@legatcre.com